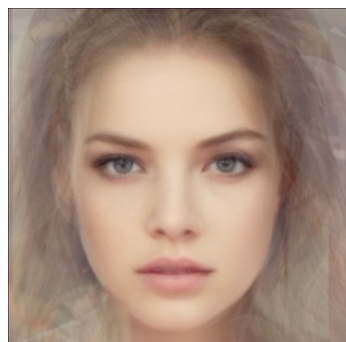


## Worksheet 1

**In pairs**, look at this face



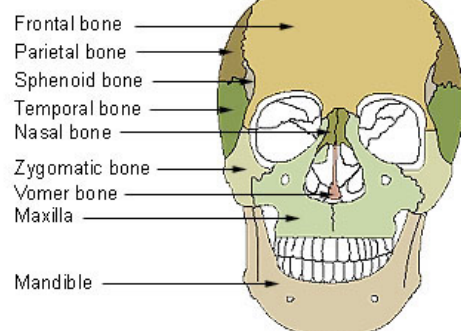
<https://goo.gl/lvbxhs>

1. Do you think this face is :

round	long	square	triangle	inverted triangle	Oval

Look at the facial bones in the diagram below.

### Facial Bones



It is the different sizes and proportion of the facial bones that form the various face shapes.

To assess a face shape, take the hair away from the face and study the facial bone structure.

<https://goo.gl/w2kHr0>

2. In pairs, look at the adjectives in the word cloud and describe the parts of each face shape. Follow the example

Face shape	Cheek bones	jawline	forehead	chin	lips	eyes	nose
Round	wide	soft	broad	short	full	wide-set	small
Long							
Square							

Triangle							
Inverted triangle							

3. Look at your partner, which type of face shape do you think she has?

.....

4. Why?

.....

.....

5. In pairs, look at the other classmates. Decide which face shapes they have and write their names in the correct column

round	long	square	triangle	Inverted triangle	oval

6. Compare your table with another pair of classmates. Did you have the same results?

☐ yes, identical! 😊

☐ not completely 😐

☐ no, totally different! ☹️

7. Discuss with your group which is the most common face shape and if you think in other countries it might be different.

8. Which shape do you think is the "perfect" face shape?

.....

9. Why?

.....

.....

10. Why do you think it is important to look at the face shape of your client?

.....

.....

.....

**complete and repeat:**

The perfect face shape is considered to be the ..... face. Corrective make-up application (contouring) is used to imitate the appearance of an ..... face shape.